

CELEBRATING OUR 18th ANNIVERSARY ISSUE

INSIDE
HOUSE+
HOME VIEWS
& INSIGHT

SROQTM

LIVE LOCAL ON THE CREATIVE COAST SARASOTA | BRADENTON

HOME OF THE YEAR

CULTURE CITY
SARASOTA
OPERA-VENI,
VIDI, VERDI

IN BRIEF
FORMER
SENATOR AND
DEVELOPER
PAT NEAL

AGENDA
FLORIDA
PRIMARIES

CHOW
HIDDEN GEM
BREAKFAST
CAFES

ELITE PLATINUM, GOLD
AND SILVER COMPETITION
WINNERS SHARE THEIR
PRISTINE SPACES



MAR 2016

FROM THE 2016 SRQ HOME OF THE YEAR COMPETITION SPONSOR



Greetings from Tempus Pro Services:

Congratulations to the winners of this year's Home of the Year Competition. We are very excited to once again participate as a sponsor and feel truly fortunate to be located in SW Florida, where the home building, design, and architecture industries provide endless creative imagination to design and technology.

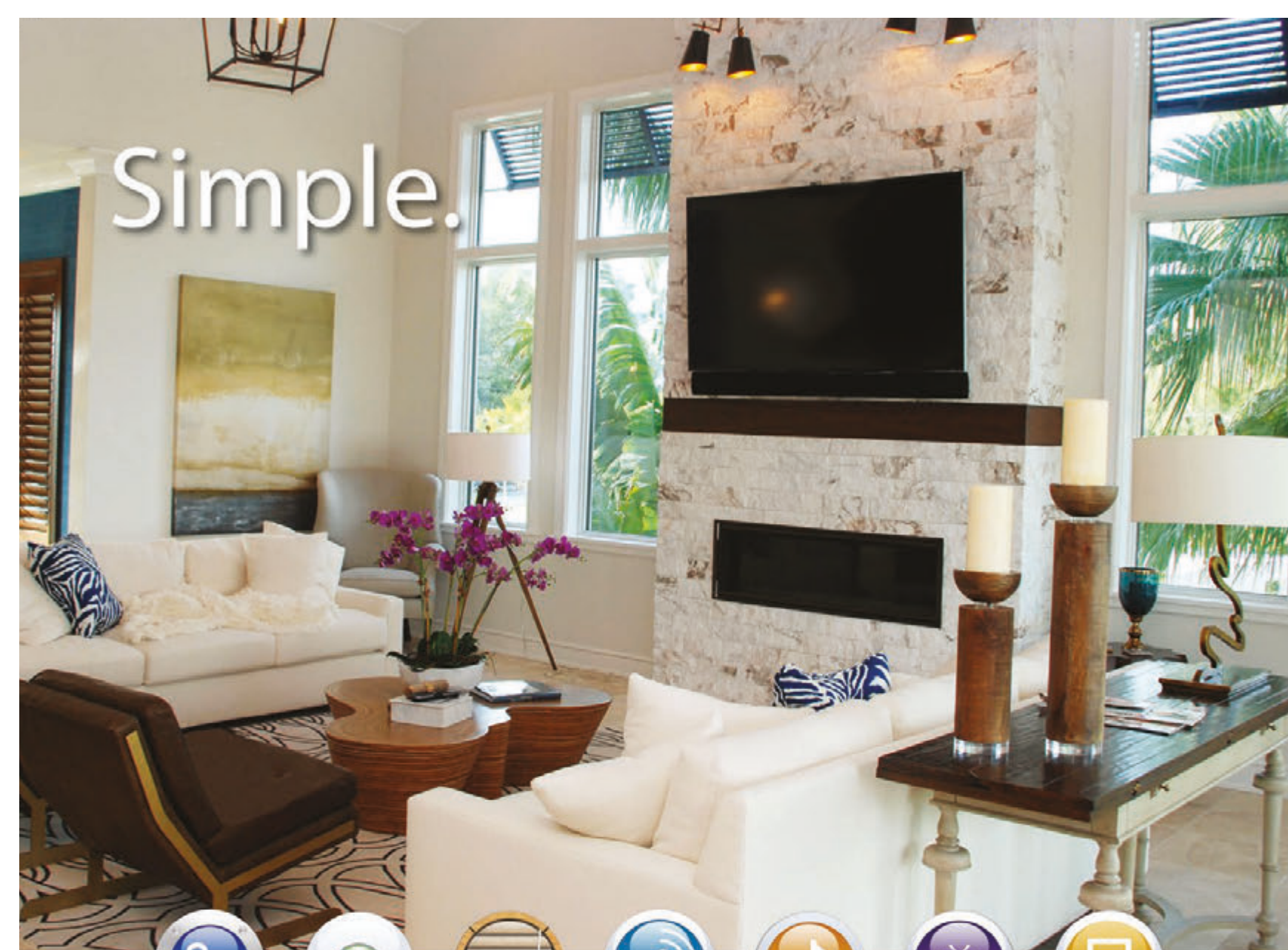
Tempus Pro Services is the most respected and widely experienced systems integrator on Florida's Gulf Coast. We are renowned for the consultative, educational approach we bring to every project we collaborate on. We've built a reputation for exceeding our customers' expectations, regardless of the size or scope of the project. Our rigorous commitment to proven technologies, products, and personnel assures our client's satisfaction, and we're proud of the reputation we've earned as one of the most respected names in our industry.

We work closely with interior designers, architects and builders to integrate technology into the building plans and feel there is no need to design around technology. We make technology integration seamless.

Tempus provides a wide assortment of products such as Home Automation, Structured Wiring & Wireless, Video Surveillance, Custom Lighting Control, Audio/Video Entertainment, Home Theater and Custom Motorized Shading. Our comprehensive project management services and experience assures that your job will be done right, on time and within budget.

We welcome you to visit our showroom and test drive the newest technological innovations before purchasing products or services.

Tempus Pro Services



Security



Lighting



Shades



Networking



Audio



Entertainment



Automation

Are your home technology needs big or small?

Purely functional? Or designed for luxurious comfort, convenience, and entertainment?

Whatever direction your electronic lifestyle takes, we can make it simple.

Completely personal. Unexpectedly fun. Amazingly affordable.

Proud sponsor of the 2016 SRQ Home of the Year



941.316.8800 | www.TempusProServices.com



HOME OF THE YEAR

The combined vision of architects, builders, interior designers and landscape professionals creates residential spaces with striking character. Our annual Home of the Year competition recognizes the best of the best. Discover how creativity, integrity, form and function converge to bring these treasured homes to life. COMPETITION PRODUCED BY MARY DARBY GUIDROZ





ENCHANTING WATERS
DSDG ARCHITECTS

Water, water, everywhere. This 6,000-square-foot house was designed to emulate and reflect the aquatic elements around it by capturing the water views and bringing those elements inside. Features such as a Koi pond, living aquarium, infinity edge pool, Bay views and Gulf views are all captured from this residence. Starting with the entry, a cantilevered concrete staircase climbs over a linear Koi pond with glass insert panels to reflect the water and light the face of the home. This feature is flanked on both sides by garages. The wood flush mounted doors become invisible as the wood cladding wraps the garage corner to draw occupants inside. Once inside, an viewable from outside also, is a custom-built 2,800-gallon aquarium with living coral and exotic fish from Fiji. The purple glow of the aquarium fills the double-volume great room and spills out the glass door entry and sliding glass door patio space. The large high-gloss floor tile reflects the sky and water views from outside onto the walls and ceilings creating a ripple moiré effect. Looking through the Great room space onto the pool deck, an infinity edge pool blends the pool water with the water in Sarasota Bay to erase the distance between the Bay and the residence. The water creeps up to the residence and is only broken by a sixteen-foot-long linear fire trough. The many levels of this house are apparent from the exterior. The main floor consists of a great room with a master suite wing. The mid-floor above the garage features a fully functional theater room equipped with wet bar. The second floor features offices, guest bedrooms and two bathrooms. The top of it is a sun deck, which provides views of the Gulf of Mexico and sunsets.



Architect: Mark Sultana of DSDG Architects.
Contractor: Mike Voigt. Builder: Voigt Brothers.
Carpets and Flooring: Sticks and Stones Flooring.
Landscape: Critter Ridge Landscaping. Pool: Water
Designs. Photo by Ryan Gamma.





THIRTY OAKS
SOLSTICE ARCHITECTS

The challenge for this three-bedroom Siesta Key home was to provide a sustainable, cohesive design interwoven with the subtropical site while also providing a comfortable indoor/outdoor environment for the family to live and entertain. The sequence of arrival begins on a canopy road and the landscape design extends this gentle intimacy. At the front entry, water elements emerge. A koi pond greets visitors, providing symmetry with the rear pool and canal. Honoring the natural elements of the half-acre site, the floor plan design coexists among numerous protected live oak trees. Inside, open areas form ideal settings for entertaining. The living, dining, kitchen and rear terrace flow seamlessly. From this public sequence of spaces, the floorplan purposely progresses to semi-public, semi-private and finally private areas, with the bedrooms unfolding as far as possible from the center. The home is a partner with its setting, achieving LEED Gold certification balancing natural and man-made elements by going back to basics with true sustainability - using shade, natural ventilation, local materials and sympathy with the landscape. Daylight harvesting, drought tolerant plants, efficient water-use for indoor usage and exterior irrigation, a HERS index of 53, recycled materials including CMU, stucco, flooring, countertops and an efficient AC system are combined with a tight building. Energy-Star certified and LEED Gold certified



Architect: Solstice Architect Contractor: Voigt Brothers Construction Interior Design: Solstice Architects Kitchen Cabinets: Cabinet Design Studio Landscape: DWY Landscape Architects Pool: Water Designs Photos: Greg Wilson



VERANDAH HOUSE
HALFLANTS+PICHETTE

With generous overhangs, shaded terraces, operable systems and solar cells, the house embraces Sarasota's subtropical latitude as it opens to a sheltered courtyard. The tall, thin and narrow main house is oriented east to west. On the entire length of the house, the roof overhangs 16 feet, shading the yard and creating a cooler microclimate. The space under the overhanging roof serves as a verandah mediating the climate and allowing for a fluid transition between conditioned spaces and the exterior. The house has three street frontages. The entry is through a smaller court recessed in the south elevation. The elongated design creates an 'L' to offer privacy to the backyard. A courtyard is created between the master suite, the main house and the detached garage. One wing on the ground floor contains the kitchen, dining and living areas while the other houses the master bedroom suite. Two additional bedrooms and a gym are laid out on the second floor. The inhabitants are invited to enjoy the courtyard through seven separate access points to the yard. An interior and exterior stair on either end of the main wing creates a circulation loop offering the residents choices in their daily paths. Masonry walls wrap and protect the house from view, while the life and program of the house protrudes in and out, at times punctured by exposed concrete shadowboxes. The residence is lighter and more open to the interior courtyard. A transparent double height living area facing the courtyard invites light and vertical interaction between floors. The roof overhang is created by light steel custom trusses from which a balcony is suspended with exposed cables. The space created under the balcony offers a more intimate setting for an exterior dining terrace. A continuous clerestory runs between the trusses that are in turn supported by uninterrupted steel beams running the full length of the house.

Architect: Halflants + Pichette Contractor: Halflants + Pichette Kitchen Cabinets: Lance Jacobsen Landscape: DWY Landscape Architects Photographer: Bill Speer



CRITTENDEN RESIDENCE
WHITE BUILDINGS

The Crittenden Residence is a stunning modern home nestled comfortably in Harbor Acres. New homes in this area are required to have the lowest living floor structure above the Base Flood Elevation. This condition, directing the floor structure to be elevated several feet above the ground, is met with a tasteful design solution. To balance the difference in height, meandering stairs blend with the exterior by creating landings and landscaped terraces at the entry. This gives the modern residence a soft approach from the street, without overpowering the road. Smooth white stucco walls characterize the strong vertical and horizontal lines that define the front facade of the building. Expanding this concept is the large cantilevered roof panel, providing shade over the entry. The cool white interior walls and fixtures lend a bright and calming environment to the open interior floor plan. The homeowners' private collection of art is elegantly showcased in the expansive space and plentiful shelving. Sleek open riser mono-stringer stairs lead to the second floor, where the second and third bedrooms are accommodated. The architectural design was conceived with a social area that integrates the covered outer porch and pool with the 3,800-square-foot interior space, bringing the total home space to a spacious 5,500 square feet. The canopy provides shade to the outdoor porch of the house and serves as a connection between the pool, the lush vegetation and main living space. This area features a pleasant table for alfresco dining on summer days, and a contemporary fire pit on the opposite end for winter nights. This home has been built practicing energy-efficient construction methods

Architect: Tatiana White General Contractor: Jim Powers Interior Design: Pasquale Schianno Kitchen Cabinets: Gretchen Panet-Raymono Carpets and Flooring: Ashdown Flooring Landscape: Your Farm and Garden Pool: Holiday Pools Photos: Rimo Photo (Rich Montalbano)



BEST OVERALL HOME – UNDER \$1 MILLION



PLATINUM

CASA POCATELLO

DSDG ARCHITECTS

This one of a kind bathroom was designed to focus on the unobstructed views of Little Sarasota Bay . The overall appeal of this room was to capture the elements from the outside and bring them in. With such breathtaking views throughout this room, the stark white porcelain tile enhances the colors and scenery allowing the natural lighting inside while still functioning as a luxurious, unique bathroom. One of the key features in the bathroom is the free-standing tub that is located in front of the floor to ceiling storefront window and is the centerpiece of the room. The natural lighting that reflects off of the tub, radiating through the storefront windows, and showcases the entire space. Enhancing the display of the tub is a modern, curving chandelier suspended from the ceiling that comforts the users from the stark, harsh environment of the bathroom and intensifies the sophisticated look. The frameless glass walk-in shower utilizes the space offered and allows the owner to employ the functioning purpose of the bathroom while enjoying the view. The quartz countertop paired with the flat white lacquered panel floating vanity provides sophisticated, crisp design while complimenting the large frameless mirror that reflects the spectacular view behind the user. The positioning of the vanity and mirror were executed to ensure that the owner could enjoy the view from anywhere throughout the space. This bathroom is unique and allows the owner to use the space not only for functional purposes but also as another living space.



Designer: Leader Design Studio Contractor: Josh Wynne Construction Interior Design: Sawa Design Studio Landscape: Borden Landscape Design.Photos: Ryan Gamma Developer: Latitude 27 Properties

1414 SOUTH OSPREY

LEADER DESIGN STUDIO

Built on spec, this home reflects the desire to deliver a warm, contemporary, energy efficient and cost-effective home into the Sarasota market. Located on a small infill lot, the thoughtfully scaled and composed design blends seamlessly into the existing neighborhood. To deliver this house to market, the home is efficient in form and value underpins every aspect of the design. A warm color palette and contextual materials accent the clean lines and simple composition of this home. The façade features corrugated metal panels, lap siding, smooth stucco and stained cypress tongue and groove soffits. An ample amount of windows provide natural daylighting and cross ventilation throughout the interior of the home. At 2,400 square feet of indoor living space, the L-shaped plan is organized around a northwest facing courtyard. The open concept ground floor plan features white polished concrete floors, a beamed, tongue-and-groove wood ceiling and an exposed metal staircase with bamboo treads and handrails. A sea-glass-colored cube adjacent to the kitchen encloses a powder bath and storage, its color tone inspired by the frosted glass transoms. Pre-fabricated cabinets in the kitchen are clad with custom bamboo doors, imbuing warmth into the primarily monochromatic space. The sophisticated finish palette and unfettered layout create a dramatic backdrop for easy living. The second floor features a spacious master suite with vaulted ceilings and a second ensuite bedroom. An additional 14-by-19-foot flex room with bathroom, wardrobe and wet bar features its own outdoor staircase for private entry, offering flexibility to potential buyers. 1414 Osprey sold in less than three weeks on the market. It was awarded an FGBC Platinum certification and features a HERS index of 54. The result is a comfortable, cosmopolitan home that celebrates urban design while integrating harmoniously into its surroundings.

PLATINUM

Architect: Mark Sultana Contractor: Mike Voigt Builder: Voigt Brothers Interior Design: Architect and Owner Carpets and Flooring: Sticks and Stones Flooring Photos: Ryan Gamma





1414 SOUTH OSPREY
LEADER DESIGN STUDIO

The open concept ground floor plan features the kitchen as the centerpiece of the home. To deliver this house to market economically, the home utilizes prefabricated European cabinets, thoughtfully composed, detailed and customized to provide an elegant and sophisticated result. The kitchen sits as the bridge between the dining area and living room and features a 20-foot-long storage wall that houses the pull-out pantry cabinets and appliances. A long window serves as the kitchen backsplash providing for natural daylight and views to the tropical landscape while maintaining privacy from neighboring properties. A sea glass-colored cube adjacent to the kitchen encloses a powder bath and storage closets, its color tone inspired by the frosted glass transom windows that bring daylight into the bathroom. The kitchen design was developed around an economical prefabricated European cabinet line. At each end of the storage wall, the cabinet boxes were clad with custom fabricated edge grain bamboo doors to frame the space and harmonize with other wood finishes throughout the home. Dark gray quartz countertops complement the white waterfall bar top. A concealed range hood and integrated under-cabinet LED strip lighting provide a clean and unified appearance above the backsplash. Overhead, three slim linear pendant lights follow the vertical lines in the kitchen and correlate with the sleek hardware. The result is a modern, timeless kitchen that anchors the living space and engages its natural surroundings.



Designer: Leader Design Studio **Contractor:** Josh Wynne Construction **Interior Design:** Sawa Design Studio **Landscape:** Borden Landscape Design **Photos:** Ryan Gamma **Developer:** Latitude 27 Properties



Contractor: Nick Ferguson **Builder:** NC Ferguson Construction **Kitchen Cabinets:** Spring Bay Construction **Carpets and Flooring:** La Casa Tile **Landscape:** Artistree **Pool:** Water Designs **Photos:** Ryan Gamma

COMMONGROUND HOUSE
NC FERGUSON CONSTRUCTION

The design concept for this state-of-the-art kitchen was to create an ideal space for both daily meals and entertaining. Fully achieving its goal to accommodate congregating family and friends, the kitchen area becomes the focal point of this stunning coastal-contemporary residence. Both cabinets and island under-counter space provide functional storage in a visually engaging manner. White Cambria countertops offer durability while water all edges make it appear monolithic. Warming the cool, glossy surfaces and polished concrete flooring are custom walnut cabinets with upper and lower matching grain. A pleasantly unexpected splash of white-tiled herringbone pattern along the backsplash uplifts while adding a playful, vintage feel to the space. Ultra-modern Lucite chairs and sleek curves on the stainless faucets juxtapose the classic elements, evoking a timeless elegance in the light-filled space. Incorporating myriad highly efficient appliances and multiple work centers for prep, cooking and clean up, the kitchen was designed specifically to cater to the active, on-the-go family. Opening up to both the living and dining rooms, the layout encourages guests to interact socially in a free-flowing manner. The overall juxtaposition of color and texture strikes a refreshing note of sophistication and casual seaside charm.



PLEASANT PLACE
EUROTECH CABINETRY, INC.

This client is strongly oriented towards contemporary design. Both the architect and the interior designer specialize in contemporary design. The client wanted the kitchen to not only reflect his love of contemporary design, but to also incorporate part of his extensive (and very contemporary) art collection. The client also made it very clear that he did not want “a cold, solid white kitchen.” While the basic color of the kitchen is white, we brought in color with the counter-tops and backsplash and broke up the white with aluminum/glass door upper cabinets. The glass also allows the client to bring in a bit more color with dishes, glasses, etc. We were able to incorporate art work by eliminating the soffit on the cook top wall and arranging a place above the wall cabinets for part of the client's vase collection and by providing wall space to the left of the pantry door for one of his favorite pieces. There were a few design challenges. The first was that the client insisted on two dishwashers in the island on each side of the sink, did not want the island any wider than 7 feet and still wanted trash and recycling handy. By working closely with the contractor's plumber, we were able to get all the plumbing tucked neatly into the rear of the sink cabinet and we were able to attach pull-out units for both trash and recycling to the backs of the sink base doors. Design challenge number two was incorporating the pantry door into the kitchen cabinets to “hide” the pantry. This was as much of an installation challenge as a design challenge, but the pictures show the successful results.



Architect: DSDG Architects **Contractor:** Dynan Construction **Interior Design:** April White, Allied Kitchen Cabinets **Carpets and Flooring:** Eurotech Cabinetry, Inc. **Sticks and Stones Flooring** **Photos:** Tom Harper **Photography**

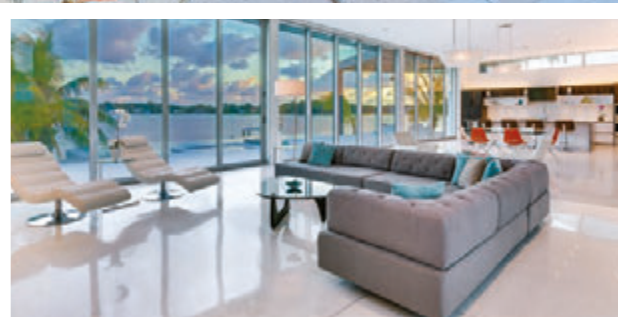
BEST GREAT ROOM



PLATINUM

CASA POCATELLO
DSDG ARCHITECTS

The unique off-axis angle of this great room conveys the most unobstructed view of Sarasot Bay and aligns with the pass to Little Sarasota Bay. To maximize this view, two pocketing and 12-foot-tall sliding glass doors with twenty feet of storefront window offers a combined 55-foot-long view of the water, sunsets, wildlife and bay activity . This 1,700-square-foot sunlight-fille great room has a custom blend white terrazzo floor with stainless steel accented control grid. The terrazzo also spills out and extends onto the pool deck blending the two spaces as one. The negative edge pool erases the visual separation between the Bay and the house as an unobstructed water surface to the great room. The living area is expansive with 12-foot-tall ceilings as well as 12-foot-long clerestory ribbon windows featured on each side. One end features dark, striated, high-end wood cabinetry with a grey haze quartz countertop. Stainless steel appliances are accented by the terrazzo floor control grid and sleek concrete island countertop, all with stainless steel-base cabinet kick plates. Sixty feet away is the glass tile feature wall with linear fireplace an TV. Flanking on each side are floating base cabinets and under-lit floating shelves. The 16-in wide ribbon windows march rhythmically to the main entrance to provide a welcoming entrance for visitors and owners alike. Expertly placed modern chandeliers, recessed LED can lights, and linear ventilation plenums match the order and symmetry evident in the design of the house.



Architect: Mark Sultana **Contractor:** Mike Voigt **Builder:** Voigt Brothers **Interior Design:** Architect and Owner **Bathroom Cabinets:** Main Street Cabinets **Carpets and Flooring:** Sticks and Stones Flooring **Photos:** Ryan Gamma.

GOLD

ENCHANTING WATERS
DSDG ARCHITECTS

The driving concept of this home is evident in the double-volume great room space. Several key features in this room enchant viewers and one that draws the most attention is the custom-built aquarium. The 2,800-gallon tank contains living coral and exotic fish from Fiji. A 120-square-foot, behind-the-scenes holding tank and equipment make the aquarium functional while serving its purpose as a piece of art and bringing wildlife into the home. The aquarium is placed in a custom-built wood panel feature wall. The aluminum-extruded sub-frame contains access panels to maintain the aquarium and a 12-foot-tall hidden pivot door allowing access to the master bedroom suite. The great room sitting area is designed for entertaining and consists of tasteful modern décor and a large custom shag rug that compliments the large-format, high-gloss, sparkle grey floor tile. From the sitting area, unobstructed views of Sarasota Bay entertain guests while looking out over the vanishing edge pool and 16-foot-long linear fire trough. o accomplish this view, ten-foot-tall glass sliding doors and storefront clerestory windows aloft bring natural lighting into this great room and enhances interior features. In addition to the natural lighting, recessed LED cans throughout the space reflect off the high-gloss floor to contrast between the stark white walls and purple aquatic glow. Anchoring the room opposite the aquarium is the custom kitchen. The high-end Italian cabinetry mimics zebrawood and is offset by white lacquered upper cabinets, glass tile backsplash and pure white quartz countertops. The center island features waterfall countertop edges and an open bar-height eating area.



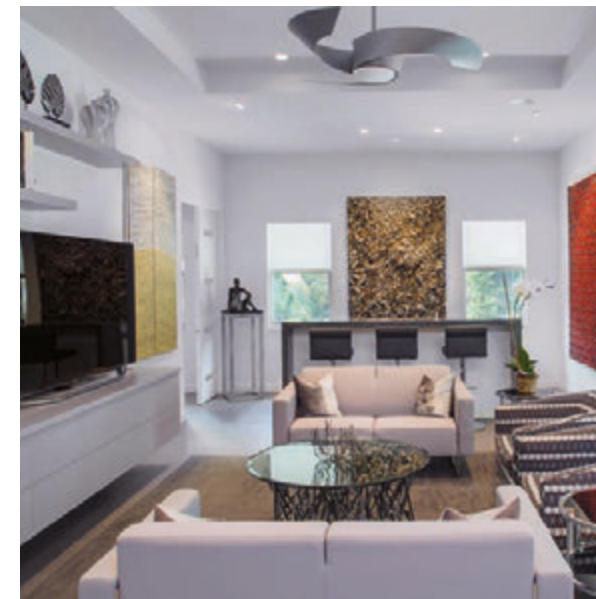
Architect: Mark Sultana **Contractor:** Mike Voigt **Builder:** Voigt Brothers **Interior Design:** Owner **Carpets and Flooring:** Sticks and Stones Flooring **Land-scape:** Critter Ridge Landscaping **Pool:** Water Designs **Photos:** Ryan Gamma

SILVER

PLEASANT PLACE
DSDG ARCHITECTS

At the beginning of the design process the clients requested to have an open floor plan that would be conducive to entertaining. The monochromatic gray color scheme throughout allows for the owner's one-of-a-kind and extensive art collection from around the world to be the main focal point in each space. The great room consists of the living room, kitchen, breakfast nook, family room, wet bar and the outdoor living space once the 12-foot sliders in the living and family room are opened. Having the main living area be one large open floor plan truly makes it comfortable for guests to have conversations while the owners entertain. In the living room, the focal point is the fireplace with its floor

to-ceiling stone cladding and two art niches framing the fireplace on each side. The lighting that is provided by the large sliding windows and doors truly allows the outside elements to gravitate their way inside. The furniture was tastefully selected to complement the features throughout the room, adding to the overall appeal of the space. The open kitchen has its very own hidden walk-in pantry and two dishwashers to make cleanup after entertaining less of a hassle for the home owners. Another key feature in the room is the complete bar located on the opposite end of the family room, which mimics the clean, crisp waterfall edge of the kitchen island. The bar was designed to help fulfill the owner's lifestyle, making it enjoyable and easy to serve guests.



Architect: Mark Sultana **Contractor:** Dynan Construction **Interior Design:** April White **Kitchen Cabinets:** Eurotech Cabinetry **Carpets and Flooring:** Sticks and Stones Flooring **Photos:** Raif Flukes

BEST RENOVATION | REMODEL



ROBINSON HOUSE RENOVATION
GUY PETERSON | OFFICE OF ARCHITECTURE

Architect: Guy W. Peterson, FAIA **Contractor:** Dean Thompson, Inc. **Interior Design:** Joe Kelly, Associate AIA **Landscape:** Grant Beatt and Joe Kelly, Associate AIA **Photos:** Ryan Gamma **Project Manager:** Joe Kelly, Associate AIA

Located in Lido Shores, a historic Sarasota neighborhood known for containing a large collection of modern homes designed by famous Sarasota School architects, the Robinson house was simply unremarkable at first sight. After extensive renovations, the house was stripped back to its bare bones, reconceived and given a second life. While many clients of today tend to demolish structures in order to build mansions, our client wished to take a more sustainable and modestly priced approach to his project. We were tasked with solving many existing internal circulation challenges while also reinventing the interior and finishes to be tailored to his modern lifestyle. The renovations extended to the exterior and landscape creating a seamless inside/outside transition with a cohesive and balanced composition of minimalist materials. Conceptually, our design approach was inspired by our client's vast and ever-evolving collection of modern art. The house was envisioned as a device to view art on the interior and an abstract painting from the exterior. Interior surfaces and forms were treated like gallery walls having a clean and smooth finish with an emphasis on uniform lighting. The horseshoe plan was internally glazed with walls of glass allowing the art to be viewed from virtually any room in the house. Large and small paintings can be viewed up close or from afar across the pool courtyard with the added drama of pool reflections. Externally, a narrow palette of materials was organized into simple forms that interplay with one another creating external spaces while redefining the presence of the original structure. Many neighbors insist that we demolished the old house and are astonished that the original house was simply transformed.



BEST LANDSCAPING | POOL



THIRTY OAKS
SOLSTICE ARCHITECTS

Nestled on a Siesta Key canal, Thirty Oaks encompasses an elegant back yard area for the owners to both live and entertain. The owners requested a home, pool and landscape design that embraced the existing large live oak trees with a layout that was both modern and livable. The house itself blurs the boundaries between inside and out. Large sliding glass doors that disappear into the walls create an uninterrupted flow from the home to the pool patio. The horizontal hardscape components of the pool deck link the order established by the modern house to the organic nature of the plantings. Paths lead from the front garden to the backyard and pool on the north and south sides of the home, maneuvering around the large oaks trees and planters – linking the various spaces. The custom shell-stone stepping stones and pavers are in the tradition of Florida shell-top concrete and include a blue glass aggregate to reflect the tone of the evening light and the waterfront site. In contrast to the transitional space of the entry sequence, the pool deck is a place that invites the residents to pause and take in the amenity of the waterfront site. The pool area and surrounding planting were designed to reflect the modern vocabulary of the architecture with clean lines and good form. Views from neighboring homes across the canal to the pool deck were carefully screened while views to the canal were enhanced.

Architect: Solstice Architects **Contractor:** Voigt Brothers Construction **Interior Design:** Solstice Architects **Kitchen Cabinets:** Cabinet Design Studio **Landscape:** DWY Landscape Architects **Pool:** Water Designs **Photos:** Greg Wilson





VERANDAH HOUSE
HALFLANTS+PICHETTE

The entry court and the yard are both shaded by photovoltaic panels mounted on glass. The solar system installed by Brilliant Harvest consists of 62 Lumos Solar LSX 240 watt frameless solar modules in three separate arrays, providing a total DC power of 14,880 watts. The arrays are connected to string inverters, which convert the DC electricity to AC for use in the home. The system will produce an average of 22,850 kWh of electricity per year, offsetting between 80 and 90 percent of all onsite consumption in the home. The frameless modules have the added benefit of being partially transparent with a clear backsheet, providing filtered shade to areas under the solar arrays and helping reduce temperatures in the outdoor areas of the home.

Architect: Halfflants + Pichette Contractor: Halfflants + Pichette
Kitchen Cabinets: Lance Jacobsen Landscape: DWY Landscape
Architect Photographer: Bill Speer



Designer: Leader Design Studio Contractor and Builder: Josh Wynne Construction Interior Design: Sawa Design Studio Landscape: Borden Landscape Design Photography Green Rater: Two Trails, Inc.



1414 S. OSPREY
JOSH WYNNE CONSTRUCTION



1414 Osprey was a thoughtful effort to provide a home that did not exist in our market. There has been little, if any, inventory of lower-priced, contemporary, green homes for sale in our area. The design and build team also stressed the importance of health, energy and water efficiency, and durability. We decided on the regional accreditation offered by FGBC as a familiar and practical green standard. To deliver all of this to market, we focused on less adornments and more exposed elements. White-based polished concrete floors, exposed-frame aluminum stairs, exposed floor framing in the living area and simple skillion roofs all add character while saving costs. The prevailing theme was efficiency. 1414 Osprey demonstrates the latest in energy savings features balanced against timeless vernacular design strategies. This home could live comfortably even without HVAC, thanks to well-considered window and door placement designed to capture breezes and durable finishes. The concrete floors are practical and beautiful and serve to keep the home cooler thanks to thermal mass. An advanced Trane two-speed HVAC with three zones also serves to purify the air with MERV11 filtration. All LED lighting, Energy Star appliances, windows, roofing, gas dryer, gas range and a tankless gas hot water heater all play a part in the incredible energy efficiency of this home. It was awarded an FGBC Platinum certification and features a HERS index of 54.



THIRTY OAKS
SOLSTICE ARCHITECTS

Achieving LEED Gold Certification and EnergyStar v3. Certified, sustainable features include a HERS index of 53, drought tolerant plants, efficient water-use for indoor and irrigation, recycled materials and an efficient AC system combined with a tight building envelope that uses spray foam insulation. Through the use of detailed design elements with a focus on nature, the home enhances its setting and is a partner with it. Carefully balancing natural and man-made elements, this design goes back to basics with true sustainability using shade, natural ventilation, local materials and a sympathy with the Florida landscape.



Architect: Solstice Architects Contractor: Voigt Brothers Construction Interior Design: Solstice Architects Kitchen Cabinets: Cabinet Design Studio Landscape: DWY Landscape Architects Pool: Water Designs Photos: Greg Wilson

2016 HOTY JUDGES COMPETITION



STEPHANIE GAINES
CURTS GAINES HALL JONES, TAMPA

Stephanie December Gaines joined Curts Gaines Hall Jones in 1984 and has been a principal of the firm since 1992. Prior to joining CGHJ, her professional experience included historic preservation of national landmark buildings, luxury custom residences, U.S. Department of Housing and Urban Development-financed housing and state government agency projections in Louisiana. Gaines' special interest in urban renewal and historic preservation has led to an extensive personal commitment to the preservation and revitalization of historic urban communities, as well as the design of historic adaptive reuse and new urban in-fill projects for mixed uses including retail, business, restaurant and residential. She has a particular fondness for providing architectural services for single home owners because of the personal relationships fostered and the process of creating for the unique owners of the home.



DAVID POORMAN
DAVID POORMAN ARCHITECT, NAPLES

David is a "native" native of Florida who arrived here in 1972. After receiving a bachelor of design at University of Florida, Poorman earned his master's in Architecture from Princeton University. He lived for 10 years in downtown Chicago, working and traveling for Perkins and Will and then for David Woodhouse Architects. A design project for an internationally-known Illinois arboretum convinced him that the Florida landscape was personally more inspiring, and he returned to his Florida roots in 2001. In 2010, Poorman established David Poorman Architect an award-winning firm specializing in small scale residential and commercial projects. His work continues to be inspired and informed by Florida's natural resources and immemorial beauty.



HUGO MIJARES
ONEDB ARCHITECTURE, MIAMI

Hugo Mijares established his Miami studio in 2007 and his Milan studio in 2012 to pursue a broad design practice. Mijares is a graduate of the UJMV in Caracas with a master's degree from the University of South Florida and post-professional studies at Harvard University. He holds a Florida Honors Fellowship and numerous design and architecture awards. Trained as an architect and industrial designer, he has sought to integrate client-based design services with speculative making. Regardless of the project scope, scale or type, the studio is careful to develop the experiential as well as the programmatic requirements of a project, with a goal to produce work that transcends function and exceeds expectations while considering the economical and environmental costs. Mijares has done projects for Technomarine, Max Mara, Alessi, Sonesta, W Resorts, Addison House and Kartell, just to name a few.

2016 WINNERS

DSDG ARCHITECTS
SOLSTICE DESIGN ARCHITECTS
WHITE BUILDINGS
LEADER DESIGN STUDIO
NC FERGUSON CONSTRUCTION
EUROTECH CABINETRY
GUY PETERSON OFFICE FOR ARCHITECTURE
HALFLANTS + PICHETTE
JOSH WYNNE CONSTRUCTION