

SRQ²⁰
ANNIVERSARY
PRESENTS THE

2019

HOME OF THE YEAR

Showcasing immaculate spatial synergies and breathtaking views while employing smart renovation techniques and building strategies, the architects, builders, interior designers and landscape artists who won in this year's SRQ Magazine Home of the Year competition collaborated to bring these incredibly stunning Gulf Coast residential spaces to life. From seaside to street-side, inside and out, these exemplars of the local built environment celebrate and contribute to an impressive legacy of award-winning architecture. COMPETITION PRODUCED BY SRQ MAGAZINE. MEET THE JUDGES ON PAGE 86.



BETONHAUS

DSDG ARCHITECTS

Betonhaus is positioned on a narrow linear site on the Gulf Coast inland waterway. The constraints of this site focused the residential layout into a linear shotgun form. Rather than a deterrent, design opportunities exploded with larger overhangs, more glass, and sleek, thin roof lines. Intended as a vacation home totaling six bedrooms and six-and-a-half baths, five guest bedrooms line the exterior, each opening onto a continuous veranda and view. The elevated constraints of the velocity zone allow the home a cantilevered protection from the elements, as it seemingly floats above the ground. Unlike many stark white boxes spotted along Florida's Gulf Coast, Betonhaus uses raw concrete, wood accents and subtle color to warm the overall aesthetic and add additional



layers of detail to the design. "Warm modern" is a new modern typology that invites inhabitants to actually live in the space rather than feel alienated. It is warm, family-friendly and easy to live in. The conditioned 5,500 square feet is elevated on the second floor via elevator and features an atrium staircase climbing a polished architectural concrete wall. The rear of the home contains the critical spaces of the home and becomes transparent with sliding glass doors flooding the home with indirect natural light. The kitchen, great room, and master suite comprise the elevated core with an expansive covered deck for outdoor living. Drawing inspiration from midcentury design, current modern features and philosophies are evident in this home with floor to ceiling glass walls, patterns of three, opacity of walls to allow passive ventilation, and a connection to the outdoors.

Architect: Mark Sultana, AIA, NCARB-DSDG **Contractor and Builder:** Voigt Brothers Construction **Interior Design:** April White, Allied ASID-DSDG Architects **Kitchen Cabinets:** Cucine Ricci **Bathroom:** Cucine Ricci **Carpets and Flooring:** Sticks and Stones Flooring **Landscape:** Borden Landscape Design **Pool By:** Water Design **Photographer:** Ryan Gamma Photography





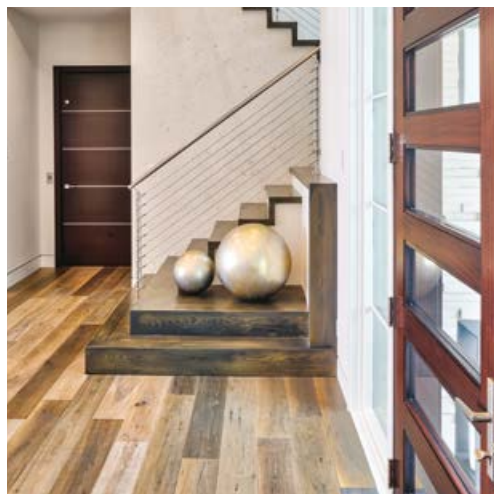
MODERN ON MOURNING DOVE

MURRAY HOMES

This stunning 5,700-square-foot Bird Key bayfront home was originally commissioned as a “spec” home, meaning that it would be designed, built and resold as an investment. The challenge was to build a luxury home with wow factor that would achieve optimum investment return and sell quickly on the open market. Murray Homes was charged with overseeing all aspects from design to build, including interior finishes, landscaping and hardscaping. The team researched and considered the highest and best use for the 15,000-square-foot parcel of land using in-depth knowledge and expertise to understand lot limitations, create the perfect aesthetic, and optimize design flow and curb appeal. They assessed Bird Key, the street and the lot, its views and the surrounding homes before assembling a group of the best professionals to craft an exceptional, modern living experience from the ground up that would appeal to the most discerning buyer. Ordinarily, a home design project begins with a general idea of size, style, desired number of bedrooms, garages, etc. However, in this instance the initial concept was crafted with no preconceived boundaries for these elements, supporting Steve Murray and Murray Homes’ ethos that scale is not always relative or relevant to design integrity, vision or quality of craftsmanship. In fact, the home was designed entirely around the outdoor living space. As the project moved into its construction phase and the house began to take shape, a unique twist came about—the investors loved the home so much that they put their own home on the market and moved into this one.



Architect: CADD Design, Shawn Ambrose **Contractor and Builder:** Murray Homes, LLC. **Interior Design:** Riley Interior Design, Inc. **Kitchen Cabinets:** Campbell Cabinetry Designs, Inc. **Bathroom:** Tile- Sticks and Stones Flooring **Carpets and Flooring:** International Wood Floors **Landscape:** Michael A. Gilkey Landscape, Inc. **Pool By:** Pool Design Concepts, LLC. **Photographer:** Mark Borosch Photography

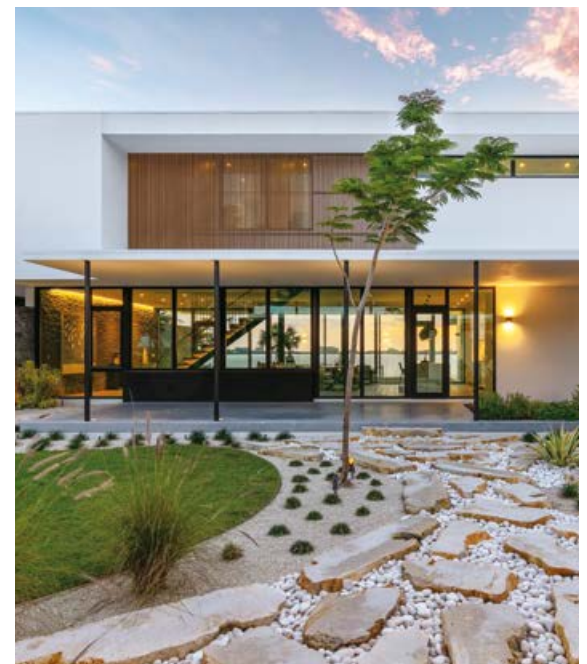




SEATHRU HOUSE

SWEET SPARKMAN ARCHITECTS

This project started with an effort to preserve and restore a mid-century modern gem. The original house was a great example of our local mid-century vernacular, but it was in a state of deterioration that required heavy repair. FEMA regulations prevented our efforts. The features that were most attractive about that old house became important parts of the design program. The house needed a humble frontage, an inviting entrance on the corner lot access, a fantastic view of the waterfront, as well as a courtyard and guest space. It needed to feel close to the ground while meeting FEMA standards. To place the home low on the lot, we created a grade level courtyard access that lifts you towards the main space or the guest space, once inside. The spaces are connected by a tectonic series of columns that float an overhead canopy; an advancement of a detail that is found in the roots of the original home. From the guest space, the street side is shielded while the courtyard is the focus. The main living space is all that stands between the guests and the waterfront. The primary walls of the great room are nearly solid glass, allowing everyone to appreciate the views of the courtyard and waterfront. When entering the front door, a long art hall, flanked by a stone anchor wall, draws your eye through the cantilevered sitting room and out to the bay. A walk up the floating stairs delivers to you more art space and four main bedrooms. Our client asked us to create a home to raise their family in. It was to be warm, comfortable, inviting, elegant, pay homage to our area and the history of the land itself, all while maintaining an air of timelessness. SeaThru House was our answer.



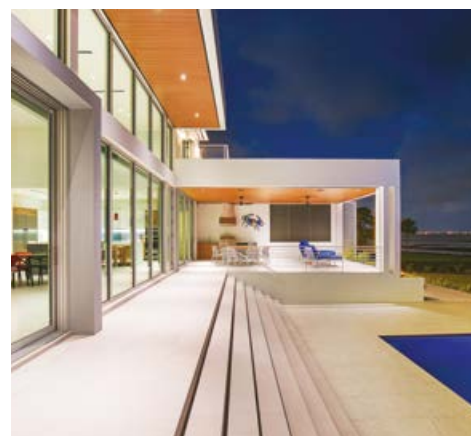
Architect: Sweet Sparkman Architects, Jerry Sparkman, AIA **Contractor:** Josh Wynne Construction **Interior Design:** Finishes, Dwell Interiors; Furniture, Chelsea Dunbar of Blu Homes **Kitchen Cabinets:** Metro Cabinetry **Bathroom:** Vanity, Pennenga Creative, Greg Pennenga **Landscape:** Borden Landscape, Tim Borden **Pool By:** Pools by Ron, Ron Schulz **Photographer:** Ryan Gamma Photography **Other:** Project Manager, Jimmy Thornton, Associate, AIA.



OSPREY LANDING

DSDG ARCHITECTS

On a site overlooking the widest part of Sarasota Bay, the Osprey Landing house masterfully integrates living space and landscape. Approaching the house, you cross a forecourt garden ascending a series of terraces to arrive at the front door. The house is organized as two wings flanking a central living space—a soaring great room with floor to ceiling glass, affording a sweeping panorama of Sarasota Bay. The South wing has the kids' suite and guest room above garages that face a side street. The North wing has the master suite including a floating contemplation space that gazes back into the forecourt garden. The bay side of the house is a terraced landscape of outdoor living spaces overlooking a vast lawn that slopes down to the water. The main level has an outdoor kitchen and dining area with retractable screens. From here, a monumental stair leads down to a multi-level pool with a patio island and fire pit, the upper levels include a balcony off the guest bedroom and a roof terrace. Each outdoor space offers a different perspective on the shoreline and across the bay. The interior is punctuated by bright colors and vivid patterns in wood and tile that reflect the distinct tastes and personality of the individual family members. The split-level floor plan maximizes the livable space within the allotted building footprint of this 5000-square-foot tropical modern home.



Architect: Mark Sultana, AIA, NCARB-DSDG **Contractor / Builder :** Josh Wynne Construction **Interior Design:** Ana Santa Maria, Apex Studio **Kitchen Cabinets:** Metro Cabinet Company **Bathroom:** Metro Cabinet Company **Landscape:** Borden Landscape Design **Pool By:** Ron Schultz Pools **Photographer:** Ryan Gamma Photography

2019

SRQ HOME OF THE YEAR COMPETITION—WINNERS SHOWCASE



2019
PLATINUM
**HOME
OF THE
YEAR**
SRQ Magazine

2019
GOLD
**HOME
OF THE
YEAR**
SRQ Magazine

Creatively shaping the built environment - connecting people with nature and each other.
300 S ORANGE AVE, SARASOTA, FL | 941.365.6530 | DWYLA.COM

DWYLA
landscape architects



RIVETTA RETREAT

DSDG ARCHITECTS

This lot is carved into the backdrop of a pristine nature preserve. The narrow linear lot on a cul-de-sac offered little street frontage for a big design opportunity. The front façade and door act as a gate to the preserve beyond that it guards. Small design elements were used, like the corner window feature wall clad in cypress, whose frame bends around the window to the ground itself and also forms the entry ceiling. A coquina shell tabby stucco accents the pearly white stucco, which pierces through the entry for a foyer feature wall. The inside volume is larger than it appears on the outside, clerestory windows open to the north to offer natural lighting and untouchable green space views. The clear views allow for the natural landscape to come into the home, bringing the outdoors in. A 20-foot-long-pool and 7-foot-square spa centers on the axial arrangement of the home. The kitchen cabinetry closely matches the coquina tabby color, as the white oak flooring adds warmth to the open space. The great room feature wall, which is also coquina shell tabby, splits the home into two sections of communal and private space. Beyond the fire and media feature wall is the family room, master bedroom suite which opens onto the pool deck, and two guest bedroom suites. Totalling just over 3,000 square feet this home is surely a relaxing retreat.

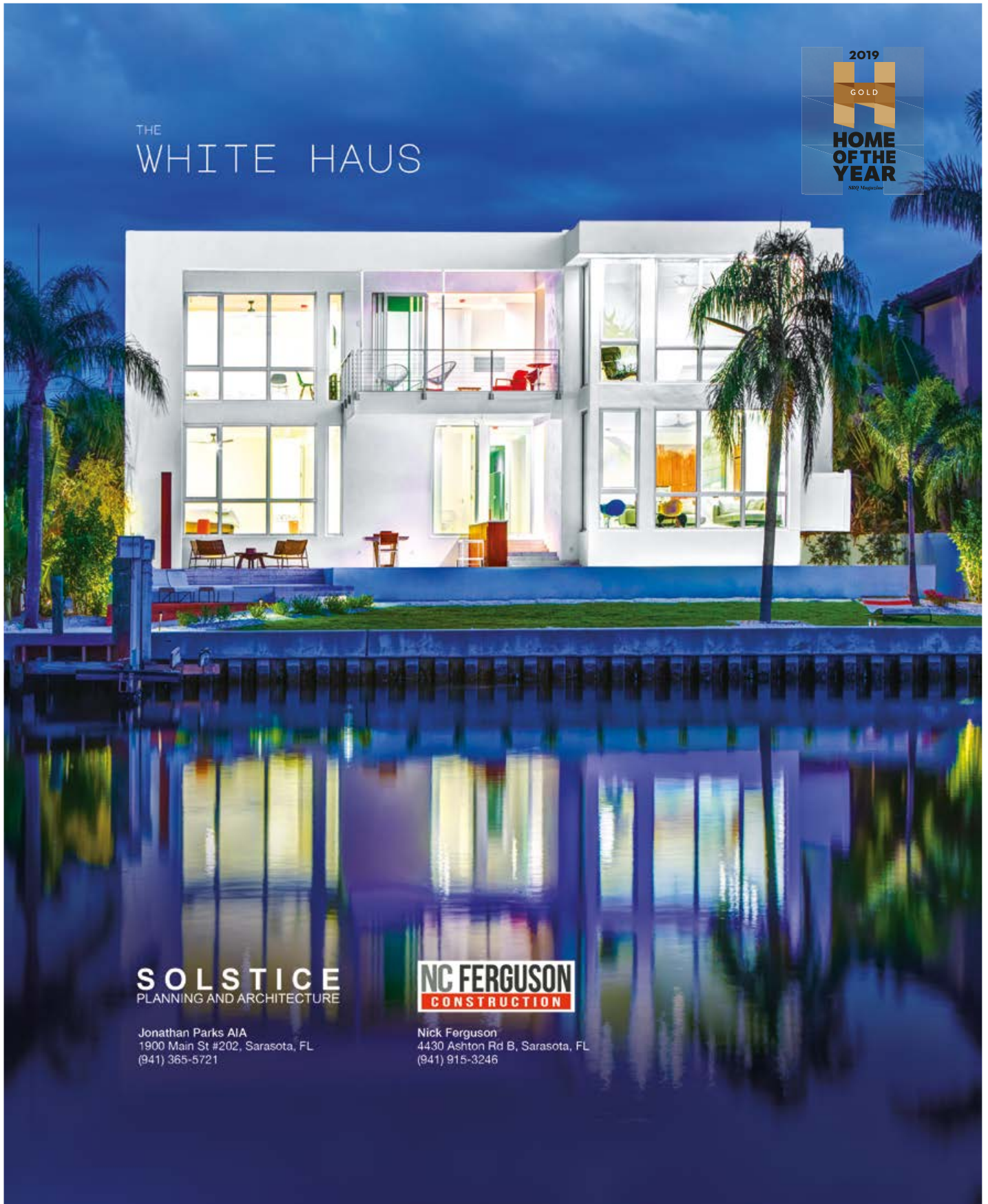
Architect: Mark Sultana, AIA, NCARB-DSDG **Contractor/Builder:** SRQ Builders, LLC **Interior Design:** April White, Allied ASID, DSDG Architects **Kitchen Cabinets:** Main Street Kitchen and Bath **Bathroom:** Main Street Kitchen and Bath **Carpets and Flooring:** Sticks and Stones Flooring **Landscape:** Critter Ridge Landscaping **Pool By:** Swim, Inc. **Photographer:** Ryan Gamma Photography

2019

SRQ HOME OF THE YEAR COMPETITION—WINNERS SHOWCASE



THE WHITE HAUS



SOLSTICE
PLANNING AND ARCHITECTURE

Jonathan Parks AIA
1900 Main St #202, Sarasota, FL
(941) 365-5721

NC FERGUSON
CONSTRUCTION

Nick Ferguson
4430 Ashton Rd B, Sarasota, FL
(941) 915-3246



THE WHITEHAUS

SOLSTICE PLANNING AND ARCHITECTURE

Located on a Siesta Key canal, this three-bedroom home articulates numerous narratives, combining scale with context, material with form, and space with light. The challenge was to provide a sustainable, cohesive design for the home, pool, and landscape layout that would appear honestly interwoven with the subtropical site, while also providing a comfortable indoor/outdoor environment for the family to live and entertain. Honoring the natural open elements of the site, the unembellished front yard connects to a compact but open backyard, while the home serves as a link between the two outdoor spaces. The architectural design extends the open landscape experience and leads the visitor to the front entry, transitioning to a more responsive sense of scale. Once there, shade elements emerge as a fundamental feature; a clean-lined overhang greets visitors and provides balance with the large rear trellis and terrace. Inside, the openness of the house forms an ideal setting for entertaining. The living, dining and kitchen flow seamlessly into one another and continue onto the rear terrace. From this public sequence of spaces, the floorplan purposely progresses to semi-public, semi-private, and finally private areas, with the bedrooms unfolding as far as possible from the center. Natural light fuses harmoniously with the architecture. Windows bring daylight into every room - even closets and pantries. Through the use of detailed design elements with a focus on nature, the home enhances its setting and is a partner with it. By carefully balancing natural and man-made elements, this design goes back to basics with true sustainability using shade, natural ventilation, local materials, and a sympathy with the Florida landscape.



2019

SRQ HOME OF THE YEAR COMPETITION—WINNERS SHOWCASE

**CUCINE
RICCI**
IMPORTED ITALIAN KITCHENS
Enjoy Life!



1515 Main St.
Sarasota, FL 34234
(941) 554-8000



www. **CUCINERICCI** .com

Architect: Mark Sultana, AIA, NCARB-DSDG **Contractor/Builder:** Voigt Brothers Construction **Interior Design:** April White, Allied ASID-DSDG Architects **Kitchen Cabinets:** Cucine Ricci **Bathroom:** Cucine Ricci **Carpets and Flooring:** Sticks and Stones Flooring **Landscape:** Borden Landscape Design **Pool By:** Water Design **Photographer:** Ryan Gamma Photography



BETONHAUS

DSDG ARCHITECTS

Stemming from its name, concrete is a vital part of this homes' design. From the columns, floor, and roof constructed entirely of concrete down to the details of a concrete countertop. The kitchen is placed in the rear towards the water frontage of the lot, as the bay view opens on the site. The island is the centerpiece of the room and is crafted with white cabinets confined under a polished concrete waterfall countertop. At fifteen-and-a-half feet, the natural color and materiality of the concrete is balanced by surrounding white lacquered Italian cabinetry. The horizontality of the island is echoed with the range hood as the 54-inch wide Italian telescoping "skylight" hood stretches the room's perspective. The minimalist European design shaves all cabinetry hardware and hides appliances behind its glossy white façade. The upper cabinets are push-activated and motorized to accordion up for access. Symmetry in design is accomplished by adding a glass backsplash to mirror the sliding glass doors opening the kitchen to the outdoors. The addition of glass brings in natural light and transmits light into the demising stairwell beyond. Floor-to-ceiling sliding glass walls open to the south-facing breakfast deck to allow the flow of light into the bright kitchen. Adjacent located in a subtle raised ceiling living room, dining room. These spaces can be partitioned off for privacy for catered entertainment or left open for flexibility in any gathering. White oak floors spread through the kitchen to the surrounding rooms, creating a unity in a largely open floor plan as well as warmth to an otherwise minimalist white palette.

2019

SRQ HOME OF THE YEAR COMPETITION—WINNERS SHOWCASE



MURRAY HOMES

DREAM Big. **BUILD** Better. **LIVE** Well

murrayhomesinc.com | 941.906.7000





Architect: Sweet Sparkman Architects, Jerry Sparkman, AIA **Contractor:** Josh Wynne Construction
Interior Design: Finishes, Dwell Interiors; Furniture, Chelsea Dunbar of Blu Homes **Kitchen Cabinets:** Metro Cabinetry **Bathroom:** Vanity, Pennenga Creative, Greg Pennenga **Landscape:** Borden Landscape Design, Tim Borden **Pool By:** Pools by Ron, Ron Schulz **Photographer:** Ryan Gamma Photography **Other:** Project Manager, Jimmy Thornton, Associate.



SEATHRU HOUSE

SWEET SPARKMAN ARCHITECTS

Created to preserve the views, the SeaThru house was built with large, expansive windows facing the waterfront to allow everyone to appreciate the views of the Sarasota Bay. All spaces in the SeaThru house, even the guesthouse at the extreme eastern side of the site, are afforded the same wide open views. The master bathroom is no exception. Designed with uninterrupted glass from bedroom to bathroom, with no wall or door to break the space, the bathroom capitalizes on the waterfront. Together, the master bedroom and bathroom provide broader views than each space allows on its own. The materials used in the space were carefully chosen to continue the same color palette as the exterior. With muted colors, the attention is drawn away from the finishes and focus is given to the large floor-to-ceiling windows highlighting the waterfront. A custom vanity artfully crafted out of solid walnut was designed for the space and intended to feel like a freestanding piece of furniture. A low-profile tub and glass shower give the functionality desired of a master bathroom, while staying minimal enough to enhance the large windows and visibility to the outdoors.



2019

SRQ HOME OF THE YEAR COMPETITION—WINNERS SHOWCASE



ONE OF A KIND

Homes



CALL MICHAEL OR STEPHEN VOIGT TO
DISCUSS BUILDING YOUR NEW DREAM HOME

2015 ROSE STREET | SARASOTA, FLORIDA 34239
P: 941.926.6038 | WWW.VOIGTBROTHERS.COM

VOIGT
BROTHERS CONSTRUCTION
LIC# CGC1523817

Architect: Sweet Sparkman Architects, Jerry Sparkman, AIA **Contractor:** Josh Wynne Construction **Interior Design:** Finishes, Dwell Interiors; Furniture, Chelsea Dunbar of Blu Homes **Kitchen Cabinets:** Metro Cabinetry **Bathroom:** Vanity, Pennenga Creative, Greg Pennenga **Landscape:** Borden Landscape Design, Tim Borden **Pool By:** Pools by Ron, Ron Schulz **Photographer:** Ryan Gamma Photography **Other:** Project Manager, Jimmy Thornton, Associate, AIA



SEATHRU HOUSE

SWEET SPARKMAN ARCHITECTS

The transparent Great Room, at the core of SeaThru House, simultaneously affords generous views to the bay from nearly every point on the property, while also seamlessly linking the interior and exterior space. The small guest suite to the east of the site was organized to take full advantage of the site lines through the floor-to-ceiling glass, while the cantilevered den space was “pulled” aside to avoid blocking those same views. The primary walls of the Great Room are nearly solid glass, allowing everyone to appreciate the waterfront. Through the space, you can see the undulating topography of the backyard that provides sweeping views of the bay and Lido Key in the distance. The floating feature staircase above a monolithic plinth creates a beautiful focal point of the room, while keeping a thin steel profile allowing minimal obstruction of views. The furniture with low profiles and open frames, complement the light and open intention of the space. The Great Room, with its emphasis on light and views through the layout and floor-to-ceiling windows, allow the concept to carry through the home by connecting physically through architecture and visually through open visibility from main house, courtyard, guesthouse, and backyard ocean views.



2019

SRQ HOME OF THE YEAR COMPETITION—WINNERS SHOWCASE



Marble ♦ Tile ♦ Wood ♦ Carpet & More



Sarasota's Premier Sales and Installation Team

Serving The Area's Finest Custom Home Builders
And Interior Designers For Over 25 Years

(941) 706-0924 | WWW.STICKSANDSTONESSRQ.COM
1839 NORTHGATE BLVD, SUITE A, SARASOTA, FLORIDA 34234



PLATINUM

HAWTHORNE RESIDENCE

TRADEMARK INTERIORS

This 8,500-square-foot home is nestled in the Southside Village neighborhood. The homeowners envisioned a French West Indies style home full of organic and textural elements that embrace the open, outdoor lifestyle with several relaxed family gathering areas. Throughout the home, one will find a fluid sophistication through the cohesive and subtle color palette along with a wide array of textures. From the cobblestone wall panels in the foyer to the plush sofa in the living room, to the beams and wood-beaded fixture in the dining room, all joined together to accomplish the tranquility of this estate home. The huge open indoor/outdoor floorplan was achieved using two nano-wall systems on either side of the great room that connect the house with the lush outdoor courtyard on one side and the swimming pool and outdoor kitchen on the other. To make these three gathering areas function as one, flooring was the key. Solid hardwood flooring for the interior, wood-look pavers for the courtyard, and wood-look porcelain tile for the terrace all in the same finish provided a seamless flow from room to room. This grand home boasts a secret passageway to the man cave and wine cellar, enormous master bedroom suite with her den, a home gym, custom-built fire-pit, two large guest bedrooms with a lounge, secondary laundry and kids outdoor living. The house is anchored with a five-car garage on one side and a 45' lap pool with a towering grand Oak on the other, all while keeping the house and its features discreetly hidden from the street. Built like a fortress is two stories of exterior poured concrete and masonry with interior metal stud walls and impact windows, the house is safe enough for the most daring of hurricanes.

Architect: Modis Architects **Contractor/Builder:** Stellar Development, Inc. **Interior Design:** Trade Mark Interiors, Inc. **Kitchen Cabinets:** Campbell Cabinetry Designs, Inc. **Pool:** Bulldog Pools **Photographer:** Justin Labadie **Other:** Smarthouse Integration



GOLD

THE ABACO AT THE LAKE CLUB

RILEY INTERIOR DESIGN, INC.

The design directive for the Anchor Builders Abaco model in The Lake Club was to create a very approachable and welcoming presence with a casual, but tailored, crisp and coastal vibe. The floor plan warrants a feeling of open conceptual design, but yet creates nook areas that provide quaint and charming personal spaces. The very tranquil color palette of variable blues, grays and fresh whites incorporates the majestic exterior view of the extended lanai pool spaces and the lake. With a passion to design a home using mixed materials such as rich woods, contrasting true white detailed trimwork and a mixture of silver-toned metals, the Abaco Model stands second-to-none in generating the essence of "welcome home".

Architect: Design Lines **Contractor/Builder:** Anchor Builders **Interior Design:** Riley Interior Design, Inc. **Kitchen Cabinets:** The Cabinet Guy **Bathroom:** The Cabinet Guy **Carpet and Flooring:** Carpet Corner / International Wood Rile / Design Works **Landscape:** Arctic Palm Company **Pool:** Water Designs **Photographer:** Mark Borosch



2019

SRQ HOME OF THE YEAR COMPETITION—WINNERS SHOWCASE



HDI
HOLLY DENNIS INTERIORS
hollydennisinteriors.com | 941-806-5500
FL Lic# ID5707



1777 NORTHGATE BLVD., SUITE A7 SARASOTA, FLORIDA 34234
941-366-1525 | EDGEWATERCONTRACTORS.COM LICENSE #: CGC1509190

EDGE WATER
CONTRACTORS, INC.

Interior Design: Barbara Gardner, Collins Interiors, LLC.
Photographer: Nicholas Ferris Photography, LLC.

SILVER

CALIFORNIA CONTEMPORARY ON THE GULF COAST

COLLINS INTERIORS

These clients had recently extensively renovated a home on the water in south Sarasota. Accomplished builders, they had done a marvelous job of improving the flow and taking better advantage of the wonderful views. They also created a beautiful kitchen that would be the envy of any chef and updated all the bathrooms. They called Barbara Gardner of Collins Interiors to help them complete the home in terms of creating window treatments, finding some new furnishings, reupholstering some treasured antique pieces, and providing options for area rugs, bedding, lighting, and accessories. Using our copyrighted ten-page "Design Deck" to best ascertain their needs, tastes and preferences, we ascertained that they liked what they called a "California Contemporary" style that focused on rich neutrals, accented by fun patterns and textures. We worked closely with the homeowners to create a comfortable home with an elegant simplicity that reflects their love of casual entertaining for family and friends, emphasizes plenty of privacy for the adults, and reinforces a fun outdoor space enjoyed by every member of this active family. They were pleased that we were willing to work with a lot of their favorite furnishings—updating some with new paint and upholstery, and re-purposing others to work in different rooms. The result is a beautiful home that works well for daily living and entertaining.



BEST SUSTAINABILITY | GREEN



PLATINUM

OSPREY LANDING

DSDG ARCHITECTS

This state-of-the-art new home has many visually striking features. Clean lines, cantilevered structural elements, and a dramatic rear elevation designed to maximize long water views are obvious to anyone who looks at it. However, this incredible home is more than meets the eye; Durability, energy and water efficiency, indoor air quality, healthy site considerations, material selections and waste reduction were primary project goals in the design and construction of this modern beauty. The vicinity of this site to the airport carried additional testing for sound mitigation into the home. Incredible attention to detail while insulating, and a premium glass and frame system ensure the tightest envelope imaginable for air intrusion and sound transfer. The pearly white exterior and white reflective roof assembly helped to reduce heat load while a high SEER, variable speed HVAC system creates a comfortable indoor environment while managing energy consumption. The modern palette uses locally sourced materials with high recycled material content to make statements where intended. Focus was placed on areas that the structure could be exposed to reveal its own beauty. Energy-saving appliances, ventilation, and tank-less gas water heaters, as well as LED lighting and a lighting control system all help to ensure that no power is wasted. A 11.52KW Solar array makes up the small difference in consumption. During construction, 90 percent of the construction waste was recycled and most of the major construction materials feature recycled material content. This home is Certified Emerald under the National Green Building System and is Certified Zero Energy. With a HERS index of minus 7, this home regularly produces more power than it uses.

Architect: Mark Sultana, AIA, NCARB—DSDG **Contractor/Builder:** Josh Wynne Construction **Interior Design:** Ana Santa María, Apex Studio **Kitchen Cabinets:** Metro Cabinet Company **Bathroom:** Metro Cabinet Company **Landscape:** Borden Landscape Design **Pool By:** Ron Schulz Pools **Photographer:** Ryan Gamma Photography

2019

SRQ HOME OF THE YEAR COMPETITION—WINNERS SHOWCASE



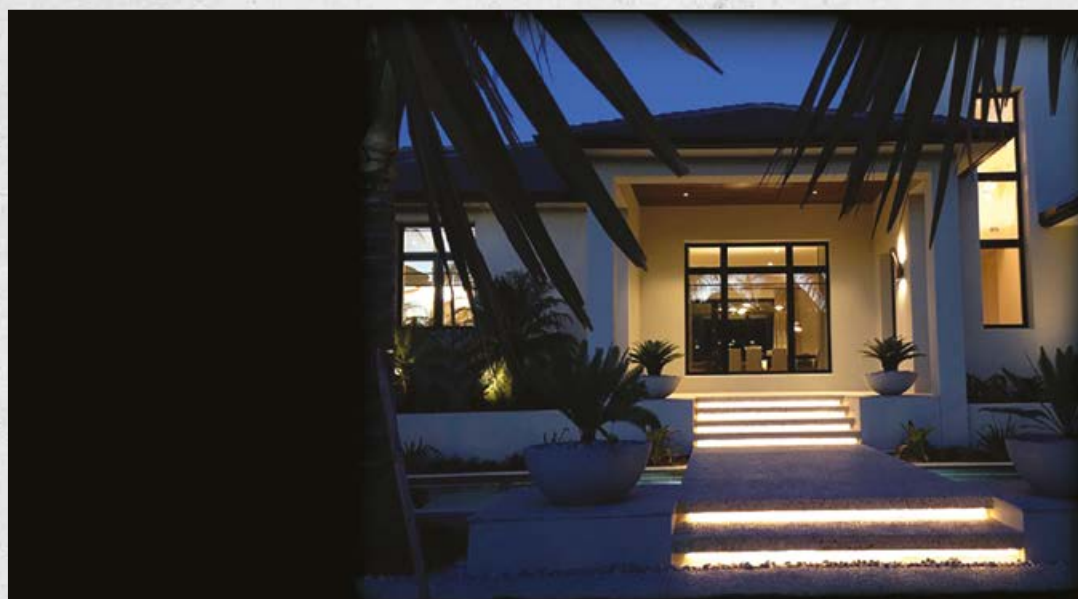
FURNITURE LIGHTING HOME DECOR INTERIOR DESIGN

TOP LUXURY LINES TO ELEVATE YOUR EVERYDAY.

1830 S OSPREY AVE, #101 | 941.364.2900
SARASOTA, FL 34239 | SHOPBLUHOME.COM



B
BLU HOME



VIZIONS, INC
BY PHILLIP GARNER

"With a Visions Inc custom home, you get craftsmanship, excellence and exclusivity throughout at a very competitive price. Each Visions home is tailored to complement the home owner's personal taste and lifestyle. And I build each one with the quality I expect in my own home." —Phillip Garner

WWW.VIZIONSCONSTRUCTION.COM | 941-302-3737 License # CBC1251115

Architect: Leader Design Studio **Contractor:** JM Meyer Construction **Interior Design:** SAWA Design Studio
Landscape Architect: DWY Landscape Architects **Landscape:** Coast Outdoor Services **Pool:** American Beauty Pools **Photographer:** Greg Wilson Architectural Photography and Ryan Gamma Photography



CITRUS AVENUE

DWY LANDSCAPE ARCHITECTS

Located just south of downtown in a transitioning neighborhood, this new home was inspired by the mid-century modern architecture for which Sarasota is known. The homeowners—avid architecture enthusiasts—selected the design team for their ability to deliver a project that emphasizes their lifestyle and that seamlessly melds architecture with its site. The layering of architecture and landscape on this suburban site facilitates the owners' lifestyle as active residents of their neighborhood and community, while maintaining a sense of privacy and serenity within the designed landscape. Working vertically, the landscape architect developed the site walls to define the point of access to the property, and provide screening from traffic and adjacent properties. The 4' accent walls at the eastern edge slip into the hardscape to give form to the main threshold. The southern site walls envelop an existing tabebuia and are the maximum height allowed by the zoning code. This long element controls the grade differential between the road and the new structure, retaining nearly 2' on the interior, and organizes the densely planted landscape screen that defines this edge and screens the sight lines from the two-story residence across the street. The simplicity of the courtyard is a studied derivative of the relationships that unfold between architecture and landscape. Floor-to-ceiling glazing provides a visual connection to this space. The pool itself was designed for both active and passive use and includes a lap lane, shallow lounge area and a low-profile "island," pulled away from the deck by a thin channel of water. The landscape architect reinforced the architecture of the landscape with deep pink, Barragan-inspired wall that aligns with the island. The scupper spillway circulates water to mask the noise of traffic less than 20' away.

2019

SRQ HOME OF THE YEAR COMPETITION—WINNERS SHOWCASE



MANUFACTURING, DESIGNING AND INSTALLING EUROPEAN CABINETS THAT IS TIMELESS AND IMPERVIOUS TO TRENDS.

European Kitchen & Bath Cabinetry • Counter Tops • Closets • Italian Floor Tile • Unique Wall Coverings

1527 Main Street, Sarasota, FL 34236 ☎ 941-366-4488 📠 941-565-7631

MainStreetKitchenAndBath.com

BORDEN LANDSCAPE DESIGN





TWO PALMS

DWY LANDSCAPE ARCHITECTS

At the Two Palms Residence – a playful nickname given to the project when, after the existing structure was razed, there were only two palms left on site – the landscape architect provided input on the siting of the new house. He was then able to shape the exterior spaces with respect to the forms of the architecture, emphasizing the link between the interior and exterior living spaces. While the organization of the site responds to that of the home, the goal for the overall planting design was two-fold: to create maximum privacy and to provide much needed shade and shadow for the east-west orientation of the home. Addressing concerns of privacy at the perimeter, the landscape design is layered at the street and dense at the side and rear property lines. In contrast, the front entry vestibule is intentionally open and welcoming. The pool terrace is an extension of the architecture, organized with an outdoor shower, lap pool, integral spa, wet-wall, and architectural concrete wall with a linear fire element. Dark porcelain tile gives texture to the wet-wall for pleasing visual and audible affects while also extending the color of the reflective pool basin vertically. The shelltop pool deck itself was detailed to have a minimal coping, creating a tight relationship with the water's surface, which in turn becomes a tranquil mirror, reflecting the sky and landscape over the uninterrupted plane. A niche set into the perimeter wall at the east end of the pool accommodates lounge seating and a cantilevered umbrella shades outdoor sectional furniture. These arrangements structure the outdoor space and also provide a buffer between the active pool area and the adjacent master bedroom. Each element is distilled to its essential form, resulting in an understated, elegant space.

Contractor/Builder: Visions Construction. **Landscape Architect:** DWY Landscape Architects **Landscape:** Coast Outdoor Services **Pool By:** Freestyle Pool **Photographer:** EVRMC, Everett Dennison.



CHEROKEE PARK FAMILY MICHAEL A. GILKEY



Architect: Clifford M. Scholz, CMSA Architects
Contractor/Builder/Interior Designer: Najjar Construction, Inc.
Landscape: Michael A. Gilkey, Inc. **Pool By:** Designed by Michael A. Gilkey and built by Pool Concepts **Photographer:** Max Kelly **Other:** Fire Table Designed by Michael A. Gilkey, Inc. crafted by Jake Brady Concrete; Yoga Garden Designed by Michael A. Gilkey, crafted by Ninzan Studio

The design intention for this project was to create an outdoor living experience for a young family that complemented the clean, classic architecture of their home, while remaining cohesive with its site in one of Sarasota's oldest neighborhoods. We worked closely with our clients to identify their outdoor living style, and create a program that met their needs. We worked with the architect to properly site the home in order to maximize backyard living, and to salvage three grand live oaks on the property, thereby making the new residence feel in place in its established context. In the front yard, form and detail took center stage. The facade is highlighted by boxwood gardens with Italian Cypress focal points. The driveway was designed for adequate circulation, while using contrast and patterning to diminish one's perspective of the size of the hardscape. The effect is a charming, courtyard aesthetic, welcoming residents and guests to the front door. In the backyard, the pool, spa and deck spaces allow for separate but cohesive gathering opportunities for children and adults alike. The visual anchor for the family's outdoor living experience is a beautifully detailed sitting, reading and yoga garden, with a backlit thermally treated ash wall, polished poured-in-place concrete stepping stones, and cantilevered steps that complement the silver travertine pool deck. A concrete fire table and several planters were custom-designed and created for this space, unifying the elements through scale and a palette of materials that reflects the honed concrete terraces. Every decision for this project was made in collaboration with the client and architect, to ensure that this new home felt like it belonged in its historic neighborhood.

2019

SRQ HOME OF THE YEAR COMPETITION—WINNERS SHOWCASE



With over 15 years experience in the Landscaping industry, we are still a family owned business. Coast Outdoor Services is a design/build Landscape Company that specialize in tropical flora. Our mission is to create the garden of your dream that is unique to the individual.

SERVICES:

- Landscape Design & Installation - Pavers & Hardscape - Commercial and Residential Maintenance - Low Voltage Landscape Lighting
- Fountain and Fireplace Features



Coast Outdoor Services

3607 67th Terrace East
Sarasota, 34243
941-809-5737

COASTOUTDOORSERVICES.COM

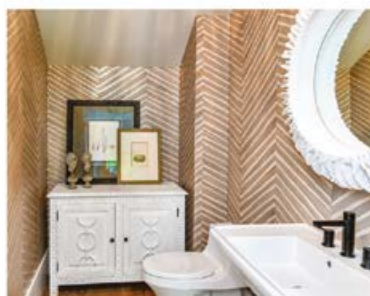
Let's Meet | Call us for a free quote | Serving Manatee and Sarasota County



CADDesign LLC

Custom Residential Design Services

800-379-9481 • www.caddesign.us



tm
interiors
trade mark interiors

Your
Style
of Living



EST. 2000

www.trademarkinteriordesign.com | tm@trademarkinteriordesign.com | [trade_mark_interiors](https://www.instagram.com/trade_mark_interiors)

2019
PLATINUM
HOME
OF THE
YEAR
SRQ Magazine

Architect: Clifford M. Scholz Architects **Contractor/Builder:** Jay Anderson, Edgewater Contractors, Inc. **Interior Design:** Holly Dennis Interiors **Kitchen Cabinets:** Campbell Cabinetry **Bathroom:** Campbell Cabinetry, Design Works, The Plumbing Place **Carpets and Flooring:** Floor SRQ **Landscape:** Michael A. Gilkey Landscape Architect **Pool:** Bluewater Pools **Photographer:** CMS Photography **Other:** Jake Brady Concrete by Design



EAGLE POINT DRIVE

EDGEWATER CONTRACTORS

The Eagle Point Drive house project, originally built in 1997, situated in the Historic Eagle Point Club on Robert's Bay, has Old Florida Charm surrounded by original 1911 guest cottages, but the owners found it to be non-functional and dated for their outdoor-focused lifestyle. Wanting a completely freshened look and more functional living spaces in a Coastal Contemporary style, the team set out to deliver a re-planned home to meet their active needs, while creating a coastal showstopper within their charming enclave. Originally a 2BR / 2BA home, the interior was completely re-planned to de-compartmentalize the spaces and create open spaces that lead you right to the outdoors. After remodel, the home now has three bedrooms, three full bathrooms, and one-and-a-half bath. The home blurs the lines of indoors/outdoors with a fully stacking sliding door, which allows for one large indoor/outdoor living space. The kitchen was created with the thoughtfulness of entertaining for family and friends. The exterior was updated with new windows, doors, entry and paint scheme. The house originally did not have a swimming pool or tamed landscaping which beaconed for resort like spaces to be created. The outdoor spaces include a private outdoor shower off the master suite, an outdoor kitchen, kayak storage, contemplative areas for relaxing and areas for entertaining. The home retains its Key West styling while capturing new, clean edges framed with modern tropical landscaping.

2019 JUDGES



HUGO MIJARES

Hugo Mijares is an award-winning and ideas-focused design practice established by Hugo Mijares in Miami in late 2008. In the same year the practice was selected by the American Institute of Architects for the 'Emerging Young Architects' Houses Tour and it has been widely published, both locally and internationally. The practice distills a holistic detail design and process-led approach in the delivery of highly creative and pragmatic solutions that resonate conceptual rigor and material invention. A strong emphasis is placed on a critical synthesis of the opportunities and constraints of each site, context and client brief as a catalyst for uniquely appropriate design outcomes in response to place, landscape and patterns of use.



STEPHANIE GAINES

Stephanie December Gaines joined Curts Gaines Hall Jones (CGHJ) in 1984 and has been a principal of the firm since 1992. Prior to joining CGHJ, her professional experience included historic preservation of national landmark buildings, luxury custom residences, U.S. Department of Housing and Urban Development-financed housing and state government agency projections in Louisiana. Since joining CGHJ, she has been extensively involved in residential, commercial, restaurant, and assisted-living facility projects for both the private and public sector. Mrs. Gaines' special interest in urban renewal and historic preservation has led to an extensive personal commitment to the preservation and revitalization of historic urban communities.



DAVID POORMAN

David Poorman's childhood was a blend of farm and beach, having moved at an early age from Ohio to Naples, Florida. He interned in carpentry while in high school, then worked as a carpenter for two years before enrolling in the architecture program at St. Petersburg Junior College, going on to receive a Bachelor of Design from the University of Florida and a Master's in Architecture from Princeton University. He lived for ten years in downtown Chicago, working and travelling for Perkins and Will and then for David Woodhouse Architects. In 2010, David established David Poorman Architect LLC (DPA) in Naples, an award-winning firm specializing in small-scale residential and commercial projects inspired and informed by Florida's natural resources and climate.

2019

SRQ HOME OF THE YEAR COMPETITION—WINNERS SHOWCASE

riley interior design



*...for every stage
of your life*



RESIDENTIAL
BUILDING
COMPLEX

1929 S Osprey Ave | riley-id.com | 941.955.5522